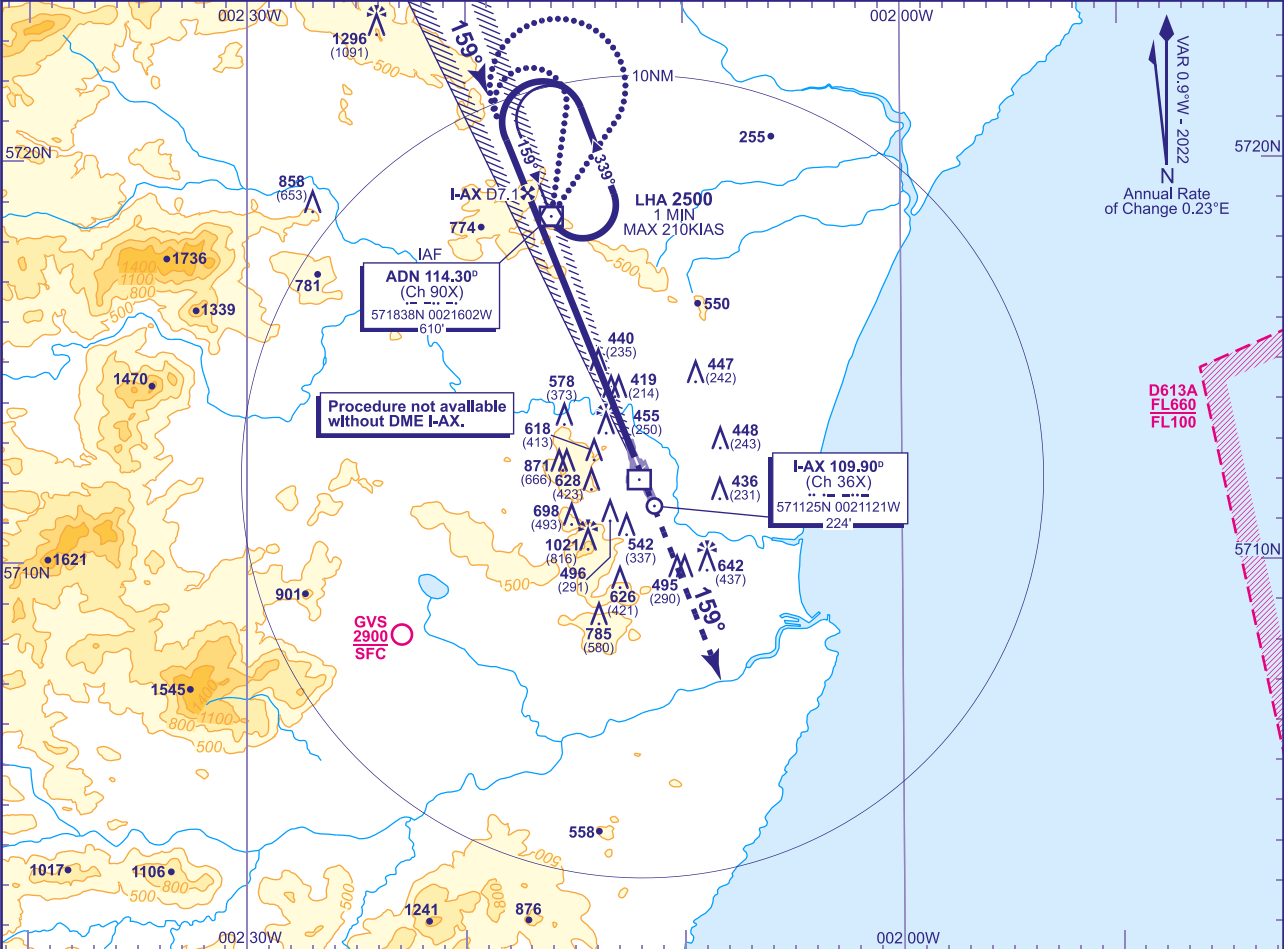


INSTRUMENT APPROACH CHART - ICAO

ABERDEEN/DYCE  
ILS/DME  
RWY 16  
(ACFT CAT A,B,C,D)

<div><div><div>180°</div><div>090°</div><div>270°</div><div>360°</div></div><div><div>41</div><div>23</div><div>41</div><div>25</div></div></div> <div>MSA 25NM VOR ADN</div>	APP 119.055	ABERDEEN APPROACH	AD ELEVATION 215	ILS/DME RWY 16 (ACFT CAT A,B,C,D)
	TWR 118.105	ABERDEEN TOWER	THR ELEVATION 205	
	121.705	ABERDEEN GROUND	OBSTACLE ELEVATION 1296 AMSL (1091) (ABOVE THR)	
	RAD 119.055, 128.305	ABERDEEN RADAR		
	ATIS 114.300 (VOR ADN)	ABERDEEN INFORMATION	BEARINGS ARE MAGNETIC	
			TRANSITION ALTITUDE 6000	

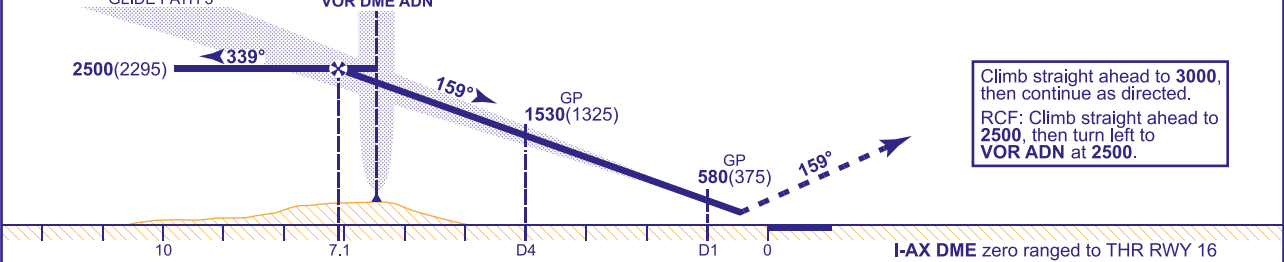


RECOMMENDED PROFILE GLIDE PATH 3°, 320FT/NM

DME I-AX	6	5	4	3	2	1
ALT (HGT)	2170(1965)	1850(1645)	1530(1325)	1210(1005)	900(695)	580(375)

RDH 51

Arrival via IAF not below MSA or 2500 whichever is higher (See Note 1). Shuttle in hold if necessary to 2500.



Aircraft Category		A	B	C	D	Rate of descent	G/S KT	160	140	120	100	80
OCA (OCH)	CAT I	369(164)	376(171)	385(180)	395(190)		FT/MIN	850	740	640	530	420
VM(C)OCA (OCH AAL)	Total Area	1150(935)	1330(1115)	1430(1215)	1430(1215)							
	East of RWY 16/34	720(505)	940(725)	1050(835)	1070(855)							

**ALTERNATIVE PROCEDURE BASE TURN REVERSAL**  
From VOR ADN: fly outbound on R008 (CAT A,B) or R034 (CAT C,D) descending as required to **not below 2500**. At I-AX DME 8.8 (ADN DME 3) base turn left to intercept the LOC. When established continue as for main procedure.

**NOTE 1** Subject to ATC approval, aircraft inbound to VOR ADN may descend to **2900** when within 10NM of DME ADN and to **2500** when within 6NM of DME ADN.  
**2** VOR ADN is 0.35NM east of LOC.